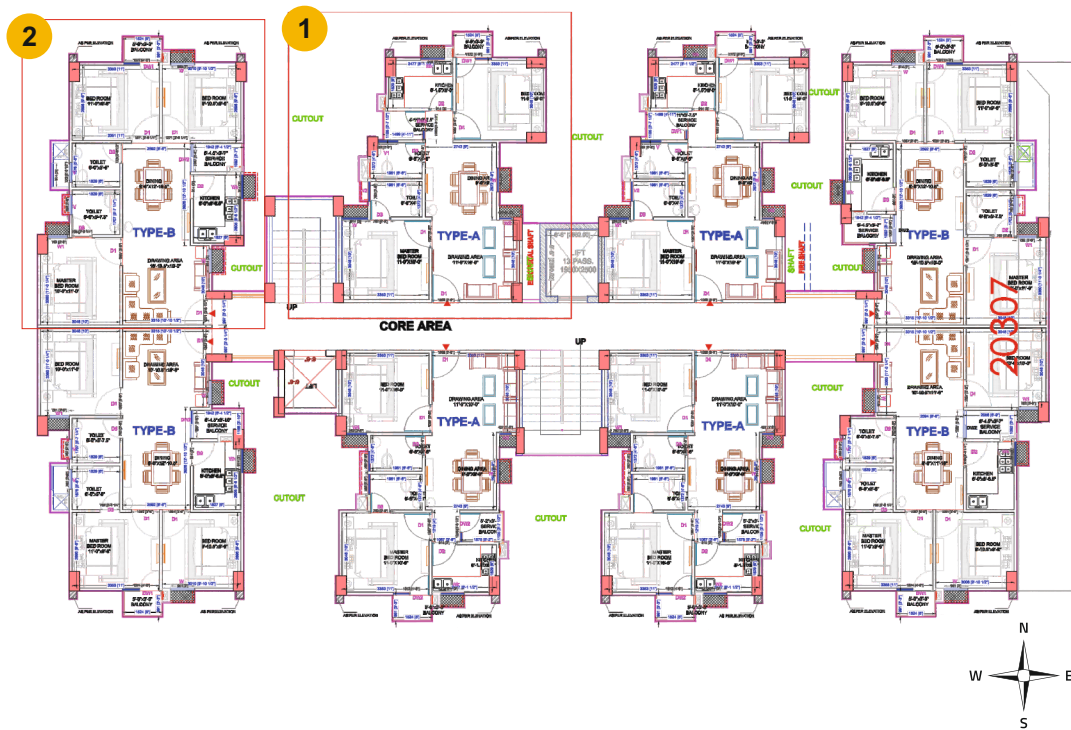




2 BHK Flat, Covered Area 60.09 Sq.M / Carpet Area 51.43 Sq.M (Approx)

3 BHK Flat, Covered Area 70.26 Sq.M / Carpet Area 61.43 Sq.M (Approx)



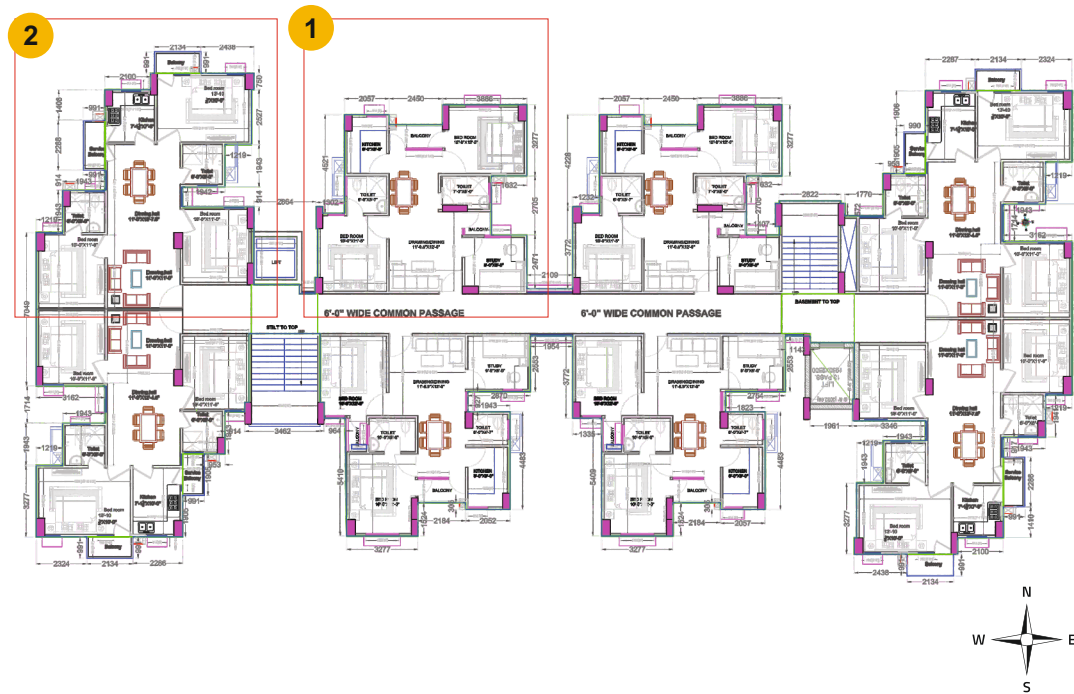
Disclaimer: Visual representation shown is purely conceptual and does not represent any planned layout, elevation or specification.



2 BHK + Study Flat, Covered Area 70.98 Sq.M / Carpet Area 60.37 Sq.M (Approx)



3 BHK Flat, Covered Area 82.94 Sq.M / Carpet Area 72.31 Sq.M (Approx)



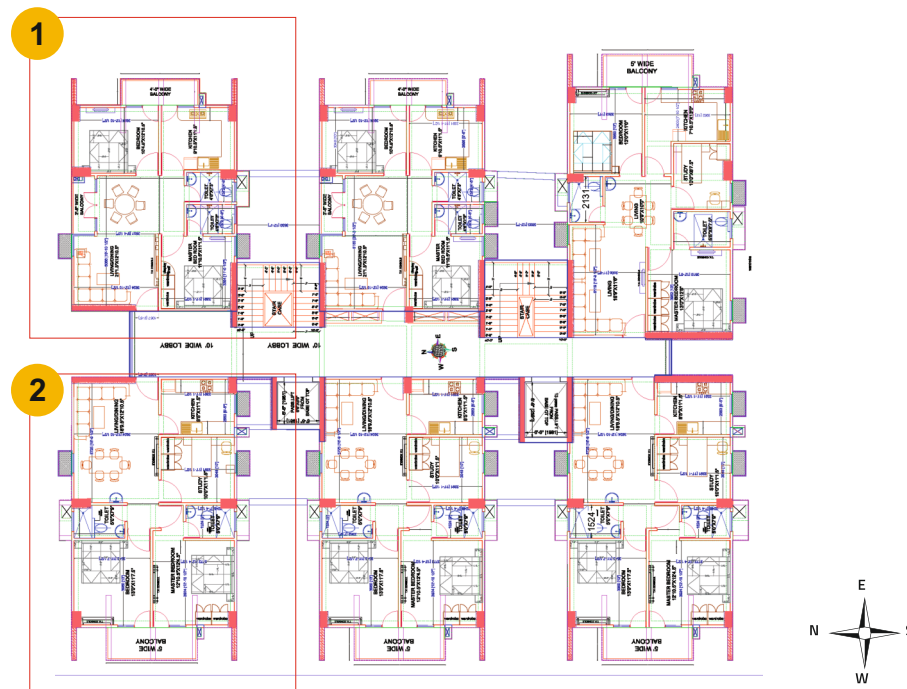
Disclaimer: Visual representation shown is purely conceptual and does not represent any planned layout, elevation or specification.



2 BHK Flat, Covered Area 78.75 Sq.M / Carpet Area 65.6 Sq.M (Approx)



2 BHK + Study Flat, Covered Area 97.54 Sq.M / Carpet Area 83.16 Sq.M (Approx)



Disclaimer: Visual representation shown is purely conceptual and does not represent any planned layout, elevation or specification.



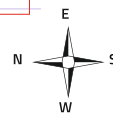
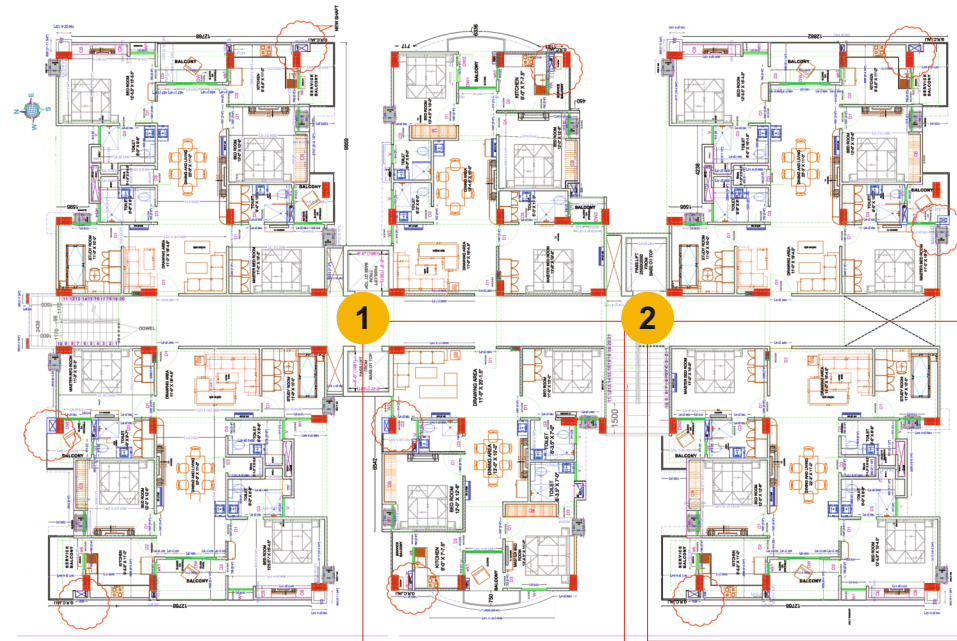
3 BHK Flat, Covered Area 123.43 Sq.M / Carpet Area 100.33 Sq.M (Approx)

4 BHK Flat, Covered Area 154.61 Sq.M / Carpet Area 126.05 Sq.M (Approx)

1



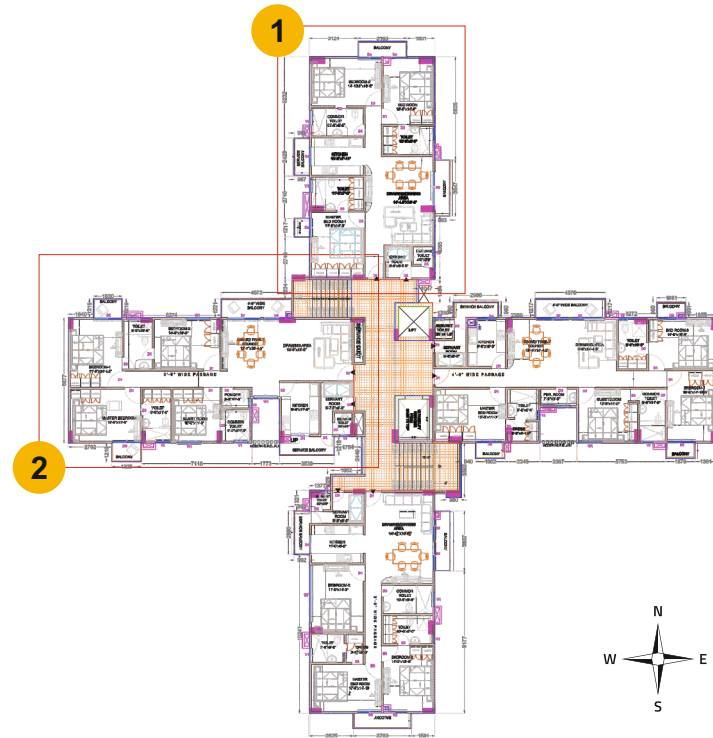
2



Disclaimer: Visual representation shown is purely conceptual and does not represent any planned layout, elevation or specification.



**3 BHK Flat, (With Servant Room) Covered Area 126.38 Sq.M / Carpet Area 109.91 Sq.M (Approx)**



**4 BHK Flat, (With Servant Room) Covered Area 156.18 Sq.M / Carpet Area 134.46 Sq.M (Approx)**



Disclaimer: Visual representation shown is purely conceptual and does not represent any planned layout, elevation or specification.